

## AXPOLY®

PP19 1014 High melt flow Polypropylene - Black

### Description:

PP19 Series polypropylene is a high performance polymer with well controlled physical properties to meet specific needs of end-user applications. The Axpoly® PP19 1014 grade has a high melt flow index needed in products with thin-walls and where fast cycle time is key to the injection moulding operation.

### Source:

Axpoly® PP19 resins to be produced from both post-consumer and industrial waste feedstocks depending on availability. All production batches are traceable back to the origin of the raw material as part of the certified manufacturing process.

### Quality Control:

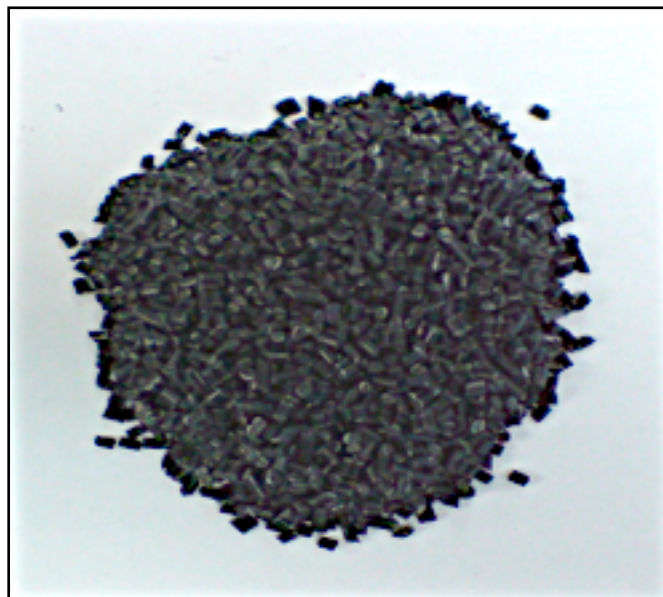
Every tonne of every batch is made under our strict ISO9001 QC system to ensure that customers are confident about the reliable and consistent performance of the polymer during thermoforming and moulding operations.

### Environment:

Produced from 100% post-consumer and/or post industrial raw materials, this product fits closely with our other Axpoly® recycled resin grades and offers the same set of user benefits, including:

- Successfully replaces virgin resin
- Huge savings in CO<sub>2</sub> impact
- Appeals to 'greener' customers
- Cost-down on raw material
- Saves the Planet!

Axpoly® is available in 1 tonne polyester big bags on a pallet, other formats possible on request.



PARAMETER	ISO	SPEC		TYPICAL PROPERTIES
		Min	Max	
MFI (2.16 kg @ 230°C)	1133	45	55	50 g / 10 mins
Density	1183-1	0.922	1.00	0.97 g / cm <sup>3</sup>
Tensile Strength	527 -1/2	16	26	23 MPa
Impact Strength	180	4	8	6.7 kJ / m <sup>2</sup>
Moisture Content	%	<0.25%		0.17%
Elongation @ break	527 -1/2	20%	50%	30%
Pellet Size	mm	2mm	4mm	3mm

## Axion Polymers

Langley Road South, Salford, M6 6HQ

Telephone: (+44) 161 737 6124

Email: [info@axionpolymers.com](mailto:info@axionpolymers.com)

Notes: All grades are assessed to ISO Standards, are ROHS compliant and REACH ready.

